



## Technical modifications on baby at 230V

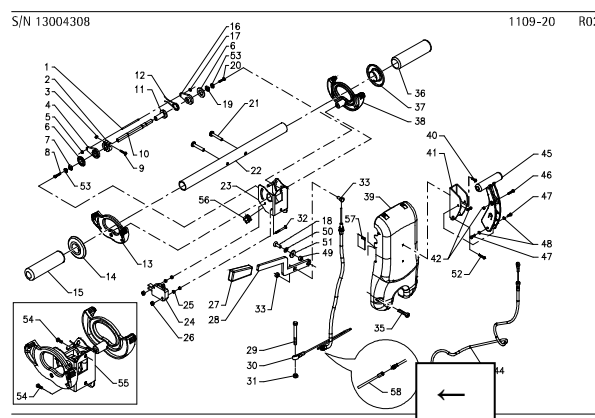
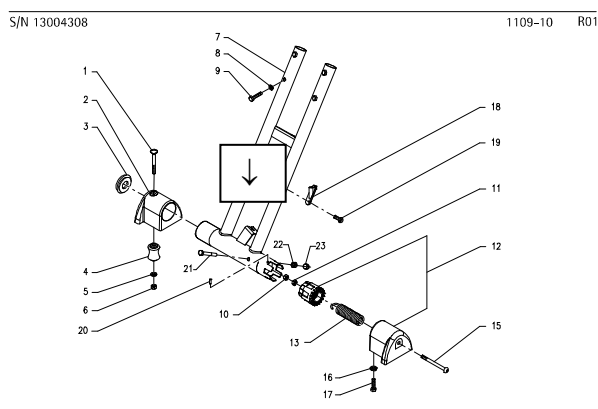
→ Starting from serial number: 13004308 dated 18/11/13  
table 1109-10 R01, pos. 7 – table 1109-20 R02, pos. 58

The handle bar tube has been replaced and an extension sheath has been inserted.

The guide system of the handle bar cable has been modified, already existing on baby 43. In the lower part of the handle bar tube the welded metallic curved end part has been taken off and an extension sheath for the cable has been assembled. The handle bar tube gets a new part number 21109030 and replaces part number 21109010.

Furthermore the extension sheath with part number 21009090 has been added.

This modification is applicable also to machines already produced replacing the handle bar tube and adding the extension.



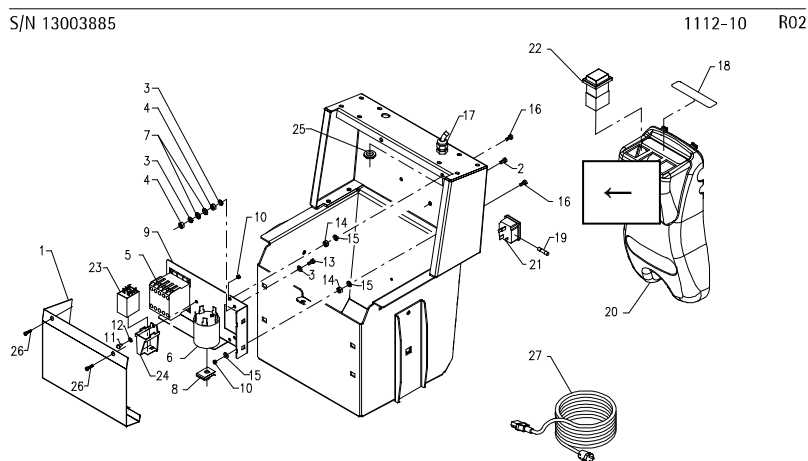
→ Starting from serial number: 13003885 dated 22/10/13 – table 1112-10 R02, pos. 2 and 16

The white zinc-coated screws have been replaced with similar ones but black, already used on baby 43. These refer to the fixing screws of the electric panel and its protection.

Take off:  
pos. 2, 60140403  
pos. 16, 60140404

Add:  
pos. 2, 60140407  
pos. 16, 60140408

2



On request the updated tables.

At your disposal for additional explanations, we remain

with best regards

**ADIATEK SRL**

Technical dept.

*Amore*